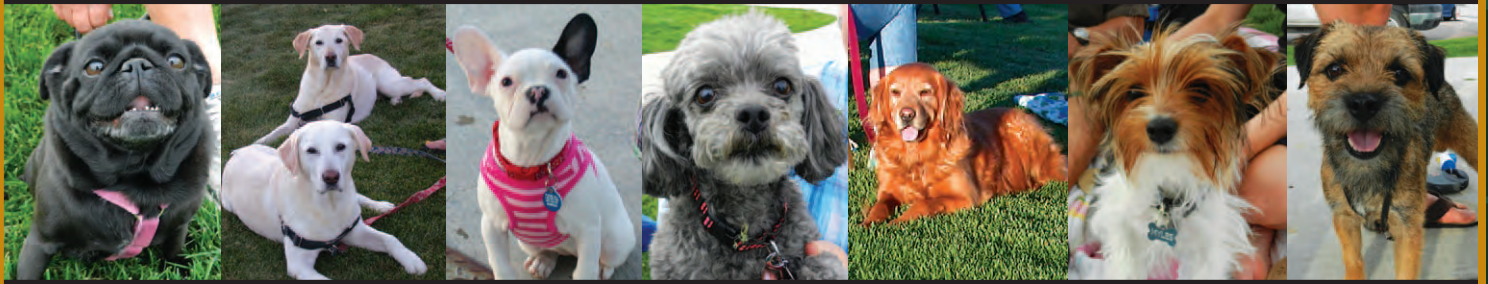


WOOF RANCH Dog Park



A Place to Romp, Run & Jump Without a Leash

WOOF Ranch Dog Park is located in Wolf Ranch, on the west side of Tutt Boulevard between Wolf Village Drive and Revelstoke Drive, across from Ranch Creek Elementary School. On-street parking is plentiful, and the walking path winds up to the entrance of the WOOF Ranch Dog Park. Overflow parking is available at the elementary school.

The dog park is natural landscaping and amenities include:

- Small dog area
- Large dog area
- Agility section with 9 pieces of equipment
- 6 benches for sitting
- Dog trash station
- Leash dock for hanging leashes
- Bulletin board for information
- Bring your own water

We invite you to visit the new WOOF Ranch Dog Park that is made possible thanks to the efforts of Wolf Ranch residents, the support of community volunteers and financial donations. For more information about WOOF Ranch Dog Park visit www.Wolf-Ranch.com

Laws of the Pack

- Please use this park at your own risk.
- Owners are held responsible and liable for their dogs' behavior at all times.
- Dogs must be accompanied by a person at least 14 years of age when inside the park.
- Dogs must be on leash until inside the entrance area.
- Pinch (prong) and spike collars should be removed once inside the gated entrance.
- Please limit the number of dogs per owner to 3, and carefully supervise your dogs and children.
- Dogs must be currently vaccinated, licensed, and not in breeding season in order to use this park.
- Dogs under 4 months old should not use the park for their own health and safety.
- Aggressive dogs should be leashed and removed from the park.
- Please remember to pick up after your dogs!



Thanks for respecting others by following the rules. Please also respect the most important rule of all: **HAVE FUN!!**

Contact your professional Realtor® for details.

719.597.WOLF(597.9653) • Wolf-Ranch.com

